

FLATBED OPERATION PRODUCTS

PRODUCTS PROVEN TO MEET THE OPERATIONAL
DEMANDS FOR FLATBED FLEETS

PRODUCT SOLUTIONS FOR FLATBED FLEET OPERATIONS



STANDARD DUTY FIFTH WHEELS WITH SLIDING
OR STATIONARY MOUNTING SYSTEMS



WELD-ON AND
REPLACEABLE KINGPINS



STANDARD OR HEAVY-
DUTY LANDING GEARS



SWIVEL MOUNT, RIGID MOUNT PINTLE
HOOKS AND DRAWBAR COUPLINGS



AIR-RIDE SUSPENSION
AXLE SYSTEMS WITH P89
AIR DISC BRAKES



HEAVY HAUL - HEAVY CONSTRUCTION

FIXED FRAME TRAILER AIR SUSPENSION SYSTEMS **CBXA AEROBEAM™** SERIES



CBX AEROBEAM™ SERIES LIGHTWEIGHT COMPACT DESIGN FOR TOP MOUNT MODELS

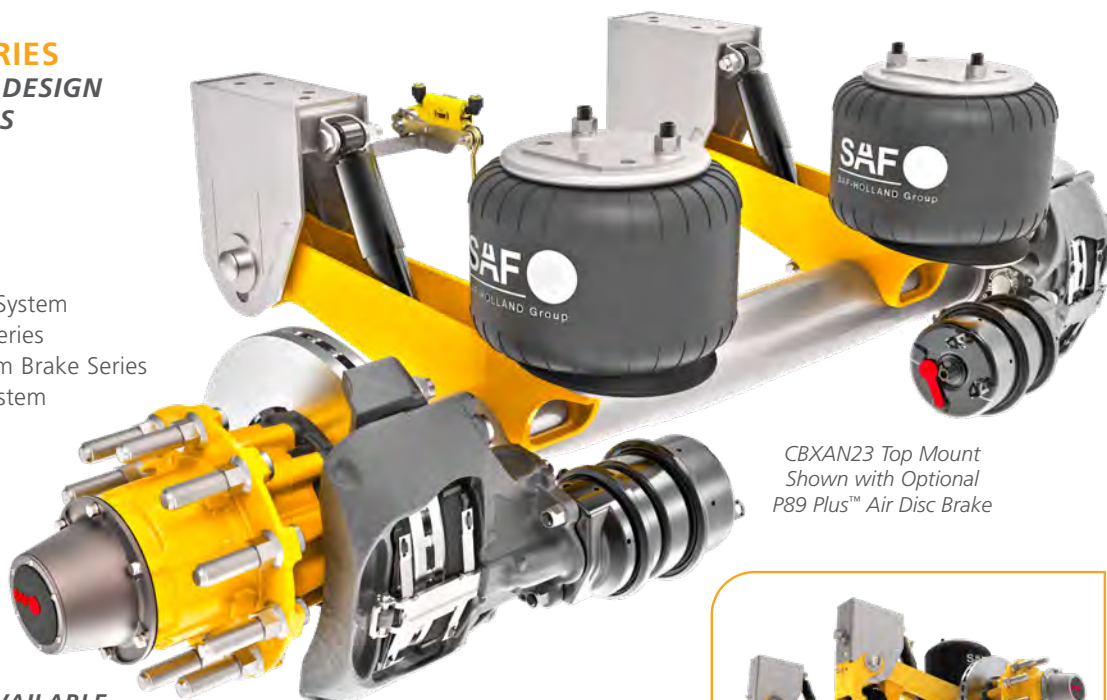
CAPACITIES:

23,000 lbs. (10,433 kg)

25,000 lbs. (11,340 kg)

30,000 lbs. (13,608 kg)

- SwingAlign™ Axle Alignment System
- Optional P89 Air Disc Brake Series
- Optional SAF SC Dressed Drum Brake Series
- Optional PosiLift™ Axle Lift System



*CBXAN23 Top Mount
Shown with Optional
P89 Plus™ Air Disc Brake*

SELF-STEER AXLE MODEL AVAILABLE



*For Multi-Axle Trailers
Accommodates Ontario SPIF Regulations*

SUSPENSIONS AVAILABLE FOR LOW PROFILE TRAILERS



*CBXu Series
Underslung Suspension*



*CBXy Series Yoke Mount
Suspension (CBy for Small
Drum Brake Package)*



OPTIONAL POSILIFT™



**OPTIONAL SC SERIES
DRESSED DRUM BRAKE**

CBXA AEROBEAM™ SERIES

SUSPENSION SYSTEM WEIGHTS (STANDARD BASE MODEL)	CBXAN23	CBXAS23	CBXAS25	CBXAS30
Undressed Drum Brake Axle (16.5" x 7" braked axle only – no slack adjusters or brake actuators)	469 lbs.	492 lbs.	524 lbs.	555 lbs.
SAF SC5 Dressed Drum Brake Axle (Includes steel hubs/drums, bearings, oil, slack adjusters and brake actuators)	858 lbs.*	881 lbs.*	913 lbs.*	942 lbs.*
P89 Disc Brake Axle	824 lbs.	847 lbs.	879 lbs.	908 lbs.

*Optional lightweight dressed drum brake wheel ends available - 68 lbs. lighter.



**BLACK ARMOUR®
IS STANDARD
WITH AEROBEAM**

ECO-FRIENDLY

**SUPERIOR CORROSION
PROTECTION**

For More Information See XL-AS20110SL-en-US

OPTIONAL P89 SERIES AIR DISC BRAKES

Premium Performance Maintenance Free Design

Featuring the legendary INTEGRAL® rotor/hub and premium sealed bearings for reduced maintenance.

Featuring:

- INTEGRAL® rotor
- Premium brake chambers
- Robust parallel spindle
- 7-Year warranty (See Warranty for Complete Details)
- Long-life sealed bearings
- SAF caliper
- Premium spindle nuts

Proven Design Quality with Genuine Value

All the benefits you expect from the world's leading trailer axle disc brake supplier, at a price point that makes sense for commercial fleets of all sizes.

Featuring:

- Heavy-duty vented rotor
- Premium matched set bearings
- 5-Year warranty (See Warranty for Complete Details)
- SAF caliper
- Parallel or taper spindle

**INDUSTRY LEADING
AIR DISC BRAKE
WARRANTY**

See XL-AS11002WC warranty statement for complete details.



OPTIONAL SAF SC7 WHEEL END PACKAGE

Now available with dressed drum brake configuration, complete your CBX AeroBeam Suspension/Axle system with SAF SC7 wheel ends. Featuring 16½" x 7" extended life brake linings, premium axle spindle nuts, optimized bearing spacers, advanced long lasting seals and an extended peace of mind 7-year warranty.

OPTIONAL SAF SC5 WHEEL END PACKAGE

Now available with dressed drum brake configuration, complete your CBX AeroBeam Suspension/Axle system with SAF SC5 wheel ends. Featuring 16½" x 7" extended life brake linings, premium axle spindle nuts, advanced long lasting seals and a peace of mind 5-year warranty.

OPTIONAL ENHANCED TIRE PRESSURE MANAGEMENT SYSTEM

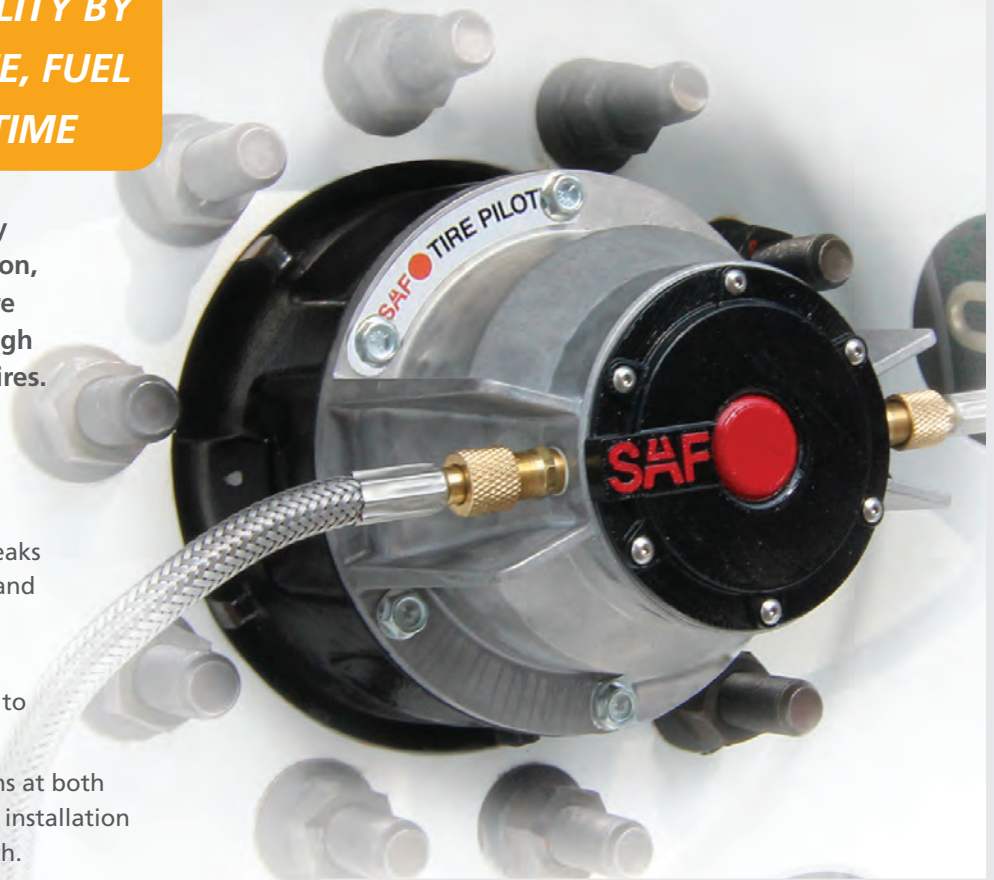


Tire Pilot Plus™ by PressureGuard
A Division of SAF-HOLLAND

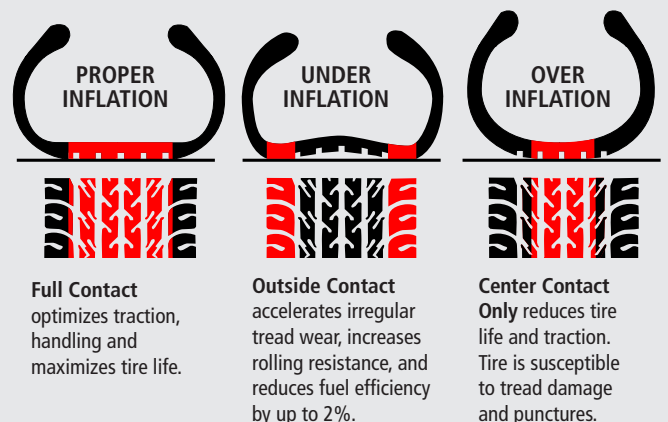
IMPROVE PROFITABILITY BY ENHANCING TIRE LIFE, FUEL EFFICIENCY AND UPTIME

Optional Tire Pilot Plus™ not only controls pressure through inflation, but also maintains equal pressure across all wheels and features high pressure relief for overinflated tires. The robust design sets it apart from competitive designs with durable components.

- Automatically responds to small leaks caused by road hazards like nails and metal debris.
- System warning light alerts the driver ONLY when there is a need to immediately seek service.
- Diamond knurled hose connections at both hubcaps and tire valve ends allow installation and replacement without a wrench.
- The stainless steel air hose connections are ported through the sides of the hubcap and are protected between the integrated fins.
- High Pressure Relief feature maintains equal and proper pressure for all tires.
- Tire Pilot Plus™ can easily be specified on CBX and ULX Series suspensions, or is available as a simple retrofit on existing trailers.
- Can save over \$750 per year per trailer*.



Proper Air Pressure is Critical to Tire Life



* TMC RP235 reports the following – Tires under inflated by 10% will wear 9% to 16% faster than properly inflated tires. Under inflated tires add roll resistance that can reduce fuel economy by as much 2%. The average fleet loses \$750 per trailer each year due to improperly inflated tires.

FLATBED **FIFTH WHEELS**

Standard-Duty Models with Exceptional Durability and Reliable Performance.



FW35 THE WORLD'S MOST VERSATILE AND PROVEN

CAPACITY:

55,000 lbs. (25,000 kg) Max Vertical Load
150,000 lbs. (68,000 kg) Max Drawbar Pull

- Durable Cast Steel Top Plate
- Proven Lock System Design
- Stationary or Sliding Mount



FW33 VERSATILITY WITH LOWLUBE TECHNOLOGY

CAPACITY:

55,000 lbs. (25,000 kg) Max Vertical Load
150,000 lbs. (68,000 kg) Max Drawbar Pull

- Reduces Lubrication Cost and Time
- Extends Maintenance Intervals
- Stationary or Sliding Mount



FWAL THE WORLD'S LIGHTEST WEIGHT MODERATE-DUTY

CAPACITY:

55,000 lbs. (25,000 kg) Max Vertical Load
150,000 lbs. (68,000 kg) Max Drawbar Pull

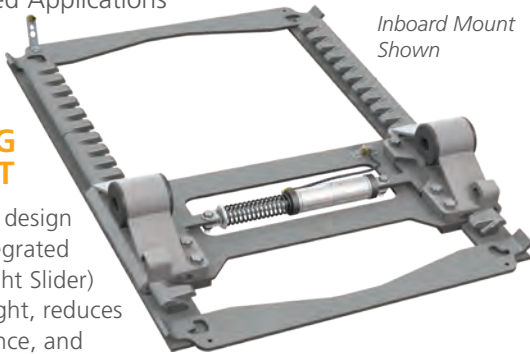
- Forged Aluminum Top Plate
- Proven Swing Lock System Design
- Stationary or Sliding Mount

STATIONARY AND SLIDING MOUNTING SYSTEMS

For Flatbed Applications

ILS SLIDING MOUNT

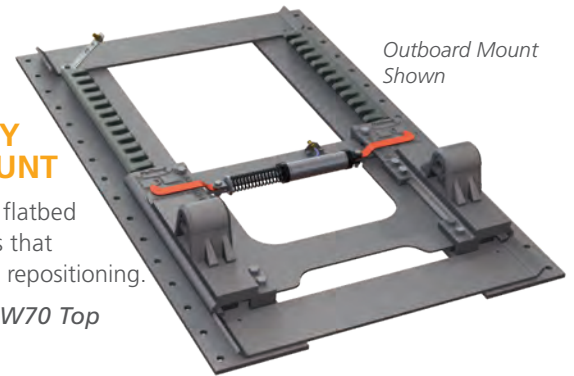
Enhanced design ILS™ (Integrated Low-Weight Slider) saves weight, reduces maintenance, and provides reliable fifth wheel repositioning for fleet requirements.



SEVERE-DUTY SLIDING MOUNT

Robust design for flatbed trailer applications that require fifth wheel repositioning.

Available with FW70 Top Plate Only



KINGPINS

High Impact and Wear Resistant for Dependable Severe-Duty Service.

HOLLAND KINGPINS ARE AVAILABLE IN:

- Mushroom and Double-Spool Configurations
- A Variety of Upper Coupler Thicknesses
- Weld-On or Replaceable Designs



SPECIFY THE **MARK V™** FOR THE INDUSTRY'S PERFORMANCE LEADER



DURABILITY FOR ROBUST PERFORMANCE

INDUSTRY-LEADING STANDARD FEATURES

Heavy-Duty Gearbox

- Gearbox with low-temperature premium lube rated for service for -65°F to 225°F

Double-D Crank Handle Connection

- Shaft with double-D end means a stronger more stabilized cranking connection

Large 5 1/8" Square Upper Tube Housing

- Large size tube with radius corners provides maximum strength to meet heavy-duty application demands

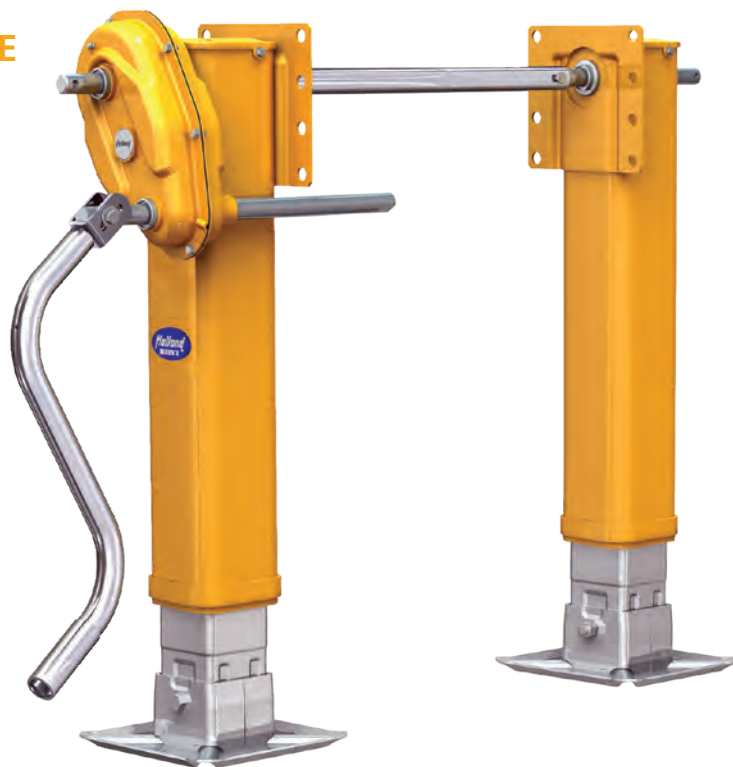
Heavy-duty One Piece Inner Tube

- One piece inner tube for maximum strength when the leg is in the extended position

Black Armour Metal Treatment



- Treatment process, unlike paint or powder coating, means the ultimate in corrosion protection with no rust creep



AVAILABLE FOR HEAVY DUTY OPERATIONS

MARK V HD™

CAPACITY:

62,500 lbs. Lift Capacity
(100 ft./lbs. Input Torque)
200,000 lbs. Load Capacity
46,000 lbs. Side Load Capacity



CAPACITIES:

62,500 lbs. Lift Capacity
(100 ft./lbs. Input Torque)
200,000 lbs. Load Capacity
32,000 lbs. Side Load Capacity

GEARING:

2.5 Turns/Inch - High Gear
33.7 Turns/Inch - Low Gear

WEIGHT:

150 lbs.
(17" Travel, RCF, MRL, Reverse Hafts)

NOTE: Weight measurements are less hardware.

All specified capacities are tested in accordance with AAR M-931.

STANDARD 5-YEAR WARRANTY OR PREMIUM 10-YEAR WARRANTY

HOLLAND Mark V models are available with standard or premium warranty options.

5-Year warranty covers defects in materials and workmanship.

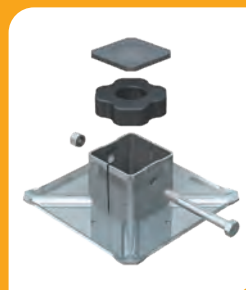
10-Year warranty* covers defects in material and workmanship and comes standard with the NoLube™ feature, HD Bearing and RCF.

The 10-Year NoLube feature also reduces your maintenance bottom line and covers unexpected repairs and associated costs, unless the product is altered or damaged.

*After 10 years of operation, HOLLAND legs with the 10-Year NoLube feature, require routine greasing every 6 months.

OPTIONAL RCF FOOT AVAILABLE –

RCF technology simply transmits the shock from the entire load in compression from steel-to-rubber-to-steel. That means reduced wear and damage to the cargo, trailer, and landing gear.



*Note: See warranties for details
For 5-year warranty see XL-LG20045WC
For Lifetime warranty see XL-LG11395WC*



TRAILER AXLES AND
SUSPENSION SYSTEMS



COUPLING AND
LIFTING SYSTEMS



SUSPENSIONS FOR
TRUCKS AND BUSES



SUSPENSIONS AND
AXLE SYSTEMS



V. ORLANDI
TOWING
SYSTEMS



TRAILER AXLES/SUSPENSIONS,
COUPLING AND LIFTING
SYSTEMS

safholland.com

SAF-HOLLAND, Inc.
800.876.3929

SAF-HOLLAND Canada Limited
519.537.3494
Western Canada 604.574.7491

SAF-HOLLAND Mexico
52.55.5456.8641