

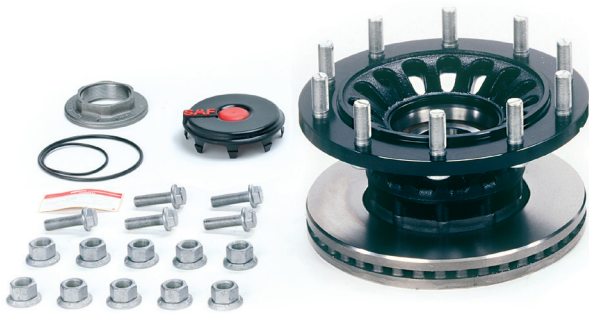
# SAF REFRESHING-KIT „INTEGRAL“

## SAF INTEGRAL-HUB UNIT

Refresh your trailer for plenty of extra kilometre. Invest in the latest SAF-HOLLAND technology an extend the lifetime of your chassis.

### THE BENEFITS FOR YOU:

- significantly increase durability by the installation of original parts
- reduced repair times by pre-assembled components
- reduced down times
- packaging advantage compared to single parts purchase



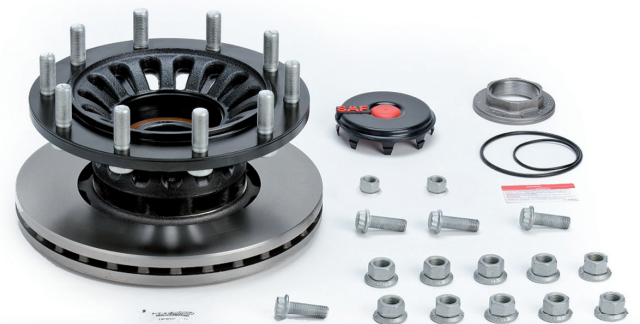
Part No.: **3 434 3128 01** (for one axle\*)

Brake 19.5"	Ø Brake disc (mm)
Knorr SB6/SN6**	377 mm
Wabco PAN 19**	377 mm

Part No.: **3 434 3127 01** (for one axle\*)

Brake 22.5"	Ø Brake disc (mm)
Knorr SB7/SN7**	430 mm
Wabco PAN 22**	430 mm
Haldex MC II-IV / Modul X**	430 mm

Compatible with steel and aluminium wheel rims  
with offset 120  
SK R(L)B 9019 / 9022



Part No.: **3 434 3129 00** (for one axle\*)

Brake 19.5"	Ø Brake disc (mm)
Knorr SB6/SN6**	377 mm
Wabco PAN 19**	377 mm

Part No.: **3 434 3130 00** (for one axle\*)

Brake 22.5"	Ø Brake disc (mm)
Knorr SB7/SN7**	430 mm
Wabco PAN 22**	430 mm
SAF SBS2220 H0**	430 mm

Compatible with steel and aluminium wheel rims  
with offset 120  
B9-19K, B9-19W / B9-22K, B9-22K01, B9-22W, B9-22S

\*These units can be replaced either per axle or per trailer (recommended)

\*\*Compatible brake pad kits have to be ordered separately

**SAF-HOLLAND GmbH**

Business Unit Aftermarket · Hauptstraße 26 · 63856 Bessenbach · Germany · Tel +49 6095 301-301

[www.safholland.com](http://www.safholland.com)